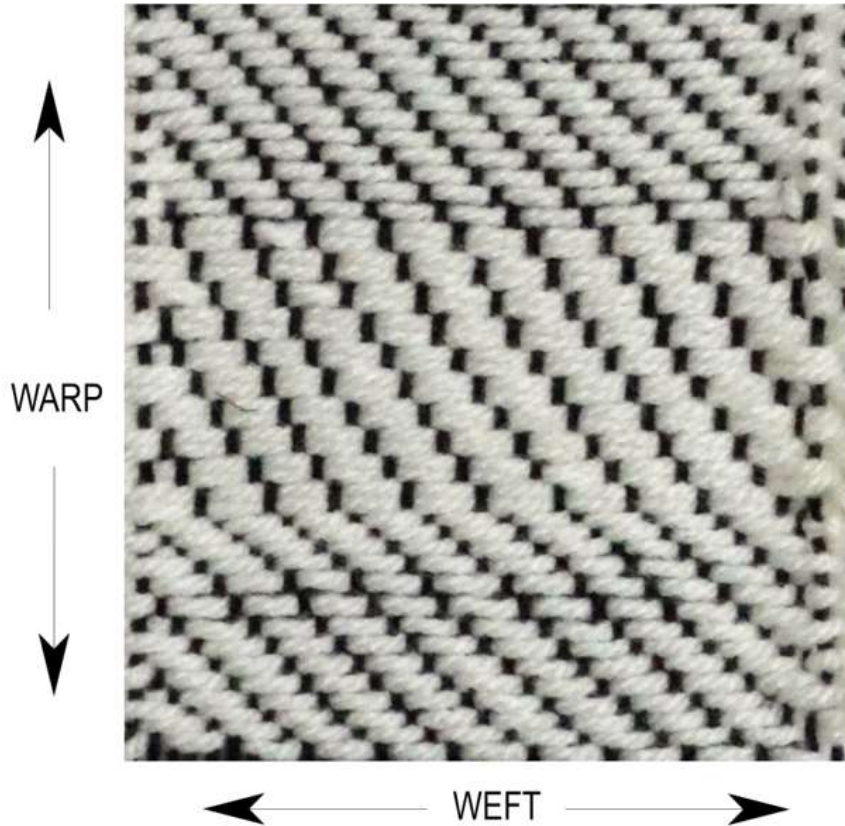


1/3 TWILL WEAVE

What is a 1/3 twill weave?

A 1/3 twill is a 'weft faced' weave, meaning the weft yarns will be more visible in the pattern than the warp strings. The name 1/3 therefore represents 1 warp string and 3 weft yarns being used to build up the diagonal stripe.



1/3 Twill Instructions

As a 1/3 twill repeats after every 4 warp strings and weft passes, warp up a number of strings that multiplies by 4 (for example, 24, 28, 32)

ROWS 1 & 2

OVER 1, UNDER 1, then,
OVER 3, UNDER 1, OVER 3, UNDER 1...
Go OVER 1, UNDER 1 on the last 2 warps strings for rows 1&2.

ROWS 3 & 4

OVER 1, UNDER 1, OVER 1, UNDER 1, then:
OVER 3, UNDER 1, OVER 3, UNDER 1....

Weave rows 1, 2, 3, 4 repetitively to build up a diagonal stripe. Try doubling up the weft or using a thicker yarn to see how it affects the pattern. Refer to the 'Taking weave off the loom' video and notes to complete the weave.

Weaving tip:

When you complete a 1/3 weave, take a look at the back of the 1/3 twill - the reverse side is a 3/1 weave! Try out the 3/1 twill tutorial and place both samples side by side. Notice how much weft and how much warp is visible in each of them.

Watch the instruction video

<https://www.youtube.com/watch?v=VVAJY3aoQQY>



A collaboration of
Paisley Museum's 'Looms in Schools' project
&
Artisan's Institute 'Young Weavers Project'



Paisley
Townscape
Heritage and
Conservation Area
Regeneration
Scheme

