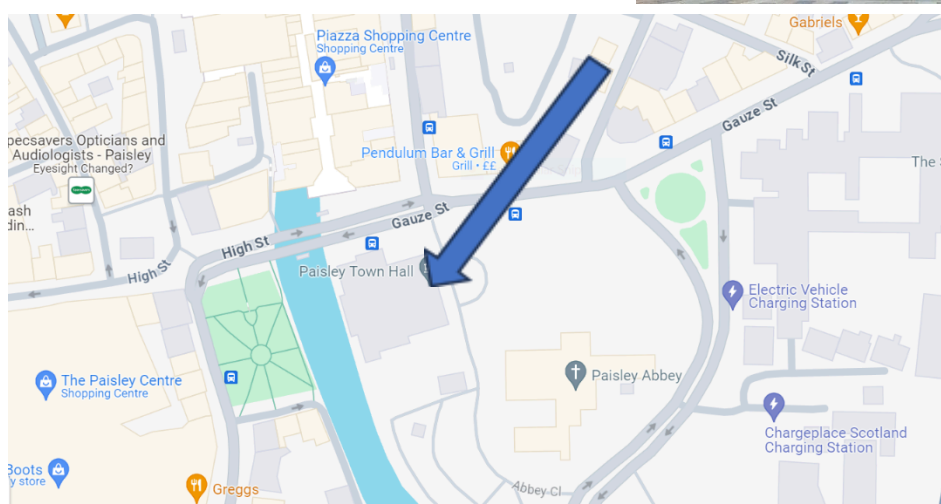


## Paisley Town hall accessibility guide

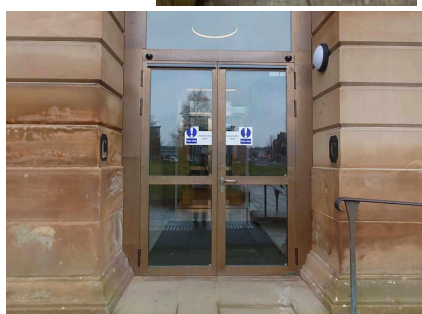
**Main Entrance:** The main entrance to Paisley town hall can be found on Abbey close, opposite Paisley abbey.



The main entrance is elevated from ground level, to access this you may use the steps and handrails, or the ramp at either side of the steps.

Access the building via the double leaf automatic doors that are found on the right-hand side of the building.

The doorway is 135cm at its narrowest point.



**Elevators and stairs:** All of the stairways in the town hall have handrails and halfway rest points. The tallest of the steps is 17cm.

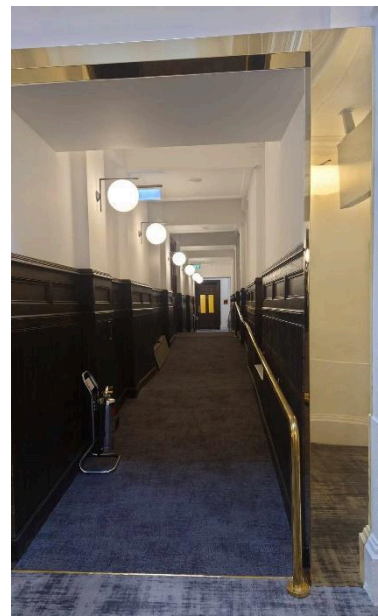
There are two main elevators, one in the south main corridor and one in the north main corridor. The lift doors are 100cm wide and standing area is 150cm x 190cm.



Both lifts are fitted with handrails on either side.

The elevators only provide access up to the 1<sup>st</sup> floor, access to the gallery (level 2) is by stairs only.

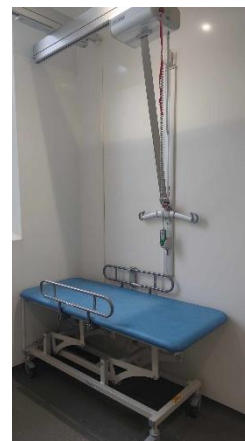
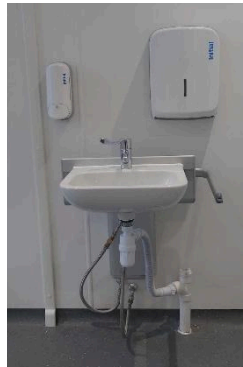
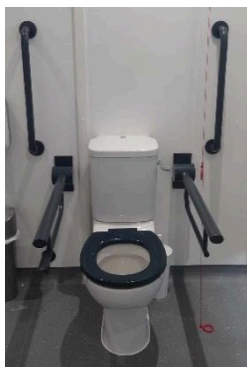
Once on the first floor, to cross over from one side of the building to the other you can use the ramp situated to the front of the building. The ramp is 152cm wide from the handrails to the opposite wall.



### **Accessible toilets and changing areas:**

There are 5 accessible toilets across the town hall, 3 on the ground floor and 2 on the first floor.

On the ground floor south side, The accessible toilet is Changing Places approved. Fitted with: a height adjustable sink, a shower with seat and hand rails, a privacy screen, an adjustable bed and a hoist. (hoist capacity 200kg) (sink height 61cm – 91cm) (Door width 84cm)





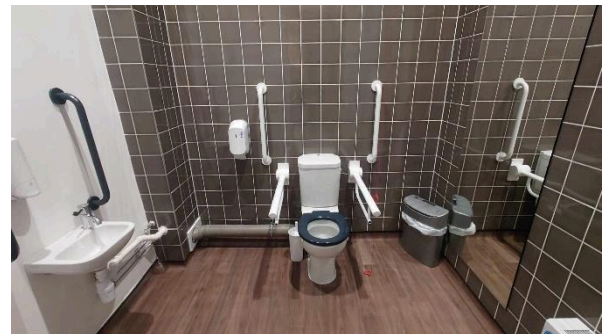
Ground floor north side accessible toilet. (Door width 74cm)

This is the closest toilet when seated in a high numbered seat on the right-hand side of the main hall or when in the Skinnedars Suite.

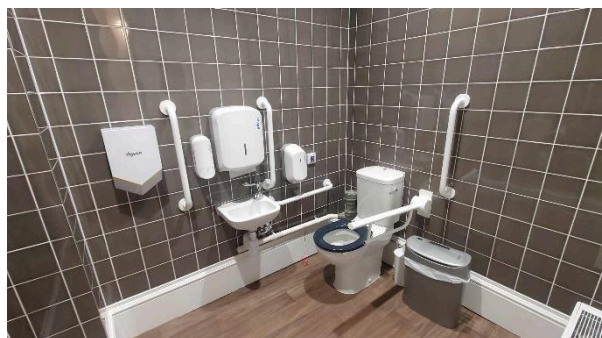


1<sup>st</sup> floor south side accessible toilet. (Door width 78cm)

This is the closest toilet when seated in a low numbered seat in the main hall, when in the jacquard suite and in the Loom Loggia



1<sup>st</sup> floor north side accessible toilet. (Door width 76cm) this is the closest toilet to high numbered seats in the main hall, when in the spinning shed or Loom Loggia.



There is also a first aid room situated on the ground floor next to the washroom. This has a privacy screen, examination bed and a sink.



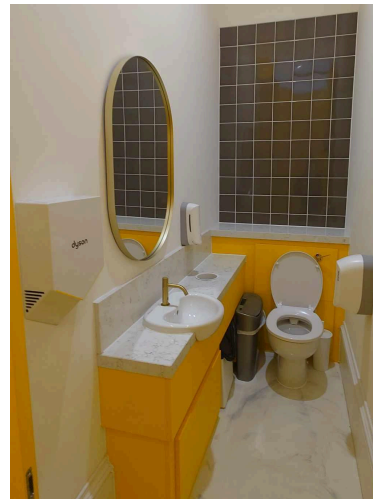
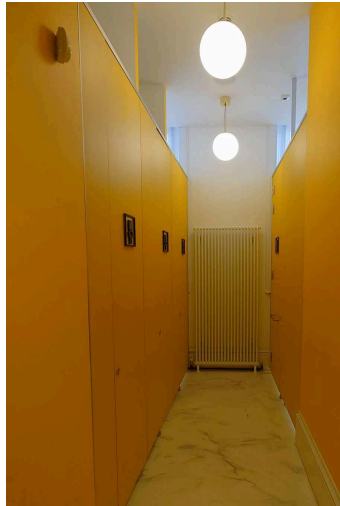
## Inclusive Toilets

There are 16 gender neutral toilets in the town hall.

4 cubicles on the north side of the ground floor

6 cubicles on the north side of the first floor

3 cubicles on either side of the second floor in the crush halls.



## Main Hall seating

Chairs are 45cm wide, 42cm from back to front and the height of the back rest is 53cm. Spaces for wheelchairs and mobility scooter can be arranged by contacting the venues box office in advance before the performance.



## Wheelchairs and mobility scooters

Wheelchairs and mobility scooters are accommodated in Paisley town hall where users notify the box office for seating arrangements.

If you only need your chair or scooter to make it to the venue and no longer need it once in the building. We do not offer a lockable space within the building where these could be left unattended. However, we will do our best to ensure that chairs and scooters can be left in close proximity to the performance area where they would be left at the customer's own risk.

**Assistance dogs**

Assistance dogs are welcome in the town hall, all we ask is that you notify the venue / box office so that we can make any necessary arrangements / changes to the seating plan.

**Hearing loop**

The town hall is fitted with a hearing loop system that will allow compatible hearing aids to hear all announcements made through the PA system, Fire evacuation systems and also the elevators. (Users must place their hearing aids into the "T" position)